

Essential Contact Information

For curbside
pick-up inquiries



GEIER WASTE SERVICES

250-638-1100

PO Box 38, Terrace, B.C. V8G 4A2

Phone: 250-638-1100

Email: geierwasteservices@citywest.ca

For recycling facility
hours and inquiries



DO-YOUR-PART RECYCLING

3467 Hwy 16E, Terrace, B.C. V8G 3P1

Phone: 250-615-7692

Website: www.doyourpart.ca

Curbside Assistance Programs



The Collection Assistance Program is offered to residents who are unable to physically bring the bins to the curb.



The Medical Waste Exemption Program is offered to residents who produce excess waste due to a medical condition.

For more information, please contact our office at 250.615.6100

Have Extra Garbage?

Extra bag tags are available for \$2 each in a group of 10. A maximum of 4 bag tags may be used per collection.

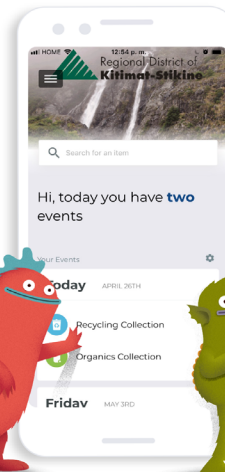
Greater Terrace Area

Curbside Organics, Recycling
& Garbage Collection Schedule

INFORMATION – GUIDE – 2024



REVISED: NOVEMBER 2023



Recycling made easy.

Download the **FREE** app on
your app store today!

You get:

- A personalized collection schedule
- Custom collection reminders
- **What Goes Where?** search tool
- **What type of recycler are you?** quiz
- Report A Problem feature



Regional District of
Kitimat-Stikine



Love this place.
Reduce your waste.

Curbside Collection Guidelines

- Materials should be curbside by 8:00 am on the designated collection day, and no earlier than 10:00 pm on the day before collection day.
- Weight limit: 23 kg/50 lbs for all bins.
- Place all containers within 2 m of the roadway.
- Remove empty containers no later than 10:00 pm on collection day.
- Do not tie down lids of containers.

Bi-weekly Garbage Collection

- Garbage must be bagged and placed in a rigid, waterproof can no larger than 121 L with a securely fitted lid.
- For extra garbage, bag tags can be purchased at the Regional District office for \$2 each in a group of 10. A maximum of 4 bag tags can be used per collection.
- Not Accepted in Garbage Collection: Recyclables, bulky items such as furniture, appliances, electronic products, liquids, and organic materials.

Bi-weekly Recycling Collection

- Use RDKS provided recycle bin
- Recycling is to be placed loose in the bin – no bags
- Rinse containers to remove food residue
- Flatten cardboard and place beside your recycling can in bundles not exceeding 1 cubic metre (36" X 36" X 36")
- Additional recycling may be placed in an extra bin that does not exceed 121 L



NOT ACCEPTED

If contaminants or unacceptable material is found in any of the waste streams, it may **NOT** be collected and marked with an 'Oops!' sticker. These stickers help you use the collection service correctly by identifying the issue. Please follow the stickers instructions or remove the unacceptable material so we can pick up your waste next time.

GLASS, PLASTIC BAGS / OVERWRAP AND STYROFOAM ARE NOT ACCEPTED CURBSIDE. PLEASE RETURN TO DEPOT. DO-YOUR-PART RECYCLING IS LOCATED AT 3467 HWY 16 E.

How To: Bi-weekly Recycling Collection



**TO THE CURB
8:00 am**

ACCEPTED

Mixed Containers

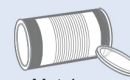
All items should be **rinsed** to remove residue



Plastic trays and clamshells



Plastic bottles, jars and jugs



Plastic or paper take-out cups, bowls, and lids

Metal cans



Cartons of cream, soup, etc.



Foil wrap and take-out containers



Plastic garden pots and seeding trays



Aerosol cans (empty)

Mixed Paper



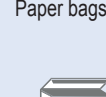
Paper egg cartons



Envelopes



Shredded paper (contained in paper bag or box)



Paper bags



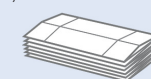
Boxboard boxes and packaging



Magazines, catalogues, phone books



Newspapers, inserts, flyers



Corrugated cardboard boxes

NOT

ACCEPTED

Do **NOT** place in curbside recycling



Plastic bags and overwrap



Glass



Paper towels, napkins and tissues



Hard and soft cover books



Hazardous waste (needles, flammable/explosive/toxic material etc.)



Hangers, pots, pans, and other scrap metal



Electronics and appliances



Toys and games



Styrofoam



Recyclable beverage containers

How To: Weekly Organics Collection

TO THE CURB
8:00
am

Container Size and Limit

- A maximum of six items may be placed at the curb each week, consisting of two containers with lids (which may contain kitchen waste and/or yard waste) and up to four kraft paper bags or bundles of yard waste.
- Each rigid container must be no more than 99 litres and 23 kg (50 lbs) when set out for collection.
- Each kraft paper bag must be no more than 110 litres and 23 kg (50 lbs) when set out for collection.
- Each bundle of yard waste must be no larger in any dimension than the height of the 110 litre kraft bag, and must be no heavier than 23 kg (50 lb).

ACCEPTED

These materials are accepted in your curbside **organics container**:

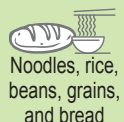
Food Scraps



Meat, bones, fish, and seafood shells



Dairy products, including cheese and yogurt



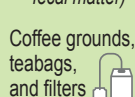
Noodles, rice, beans, grains, and bread



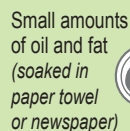
Fruit and vegetable scraps



Egg shells



Coffee grounds, teabags, and filters



Small amounts of oil and fat (soaked in paper towel or newspaper)

Food-soiled paper products



Empty cereal boxes (no plastic liners)



Pizza boxes



Newspaper (for wrapping food scraps or lining kitchen containers)



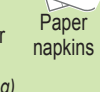
Paper bags (for lining kitchen containers, such as Bag-to-Earth)



Parchment and wax paper



Used paper dishes (no plastic coating)



Paper napkins

These materials are accepted in your curbside **organics container or kraft bag**:

Yard trimmings



Leaves and grass clippings



Weeds, plants, and flowers



Short branches and prunings (under 10 cm thick and 50 cm long)

NOT ACCEPTED

These materials are **NOT** accepted in your curbside **organics container or kraft bag** and should be recycled or safely disposed of:

Fecal matter

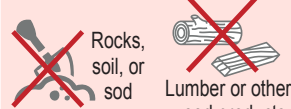


Animal waste Diapers

Large or heavy items



Branches or prunings over 10 cm thick and 50 cm long



Rocks, soil, or sod Lumber or other wood products

Plastics



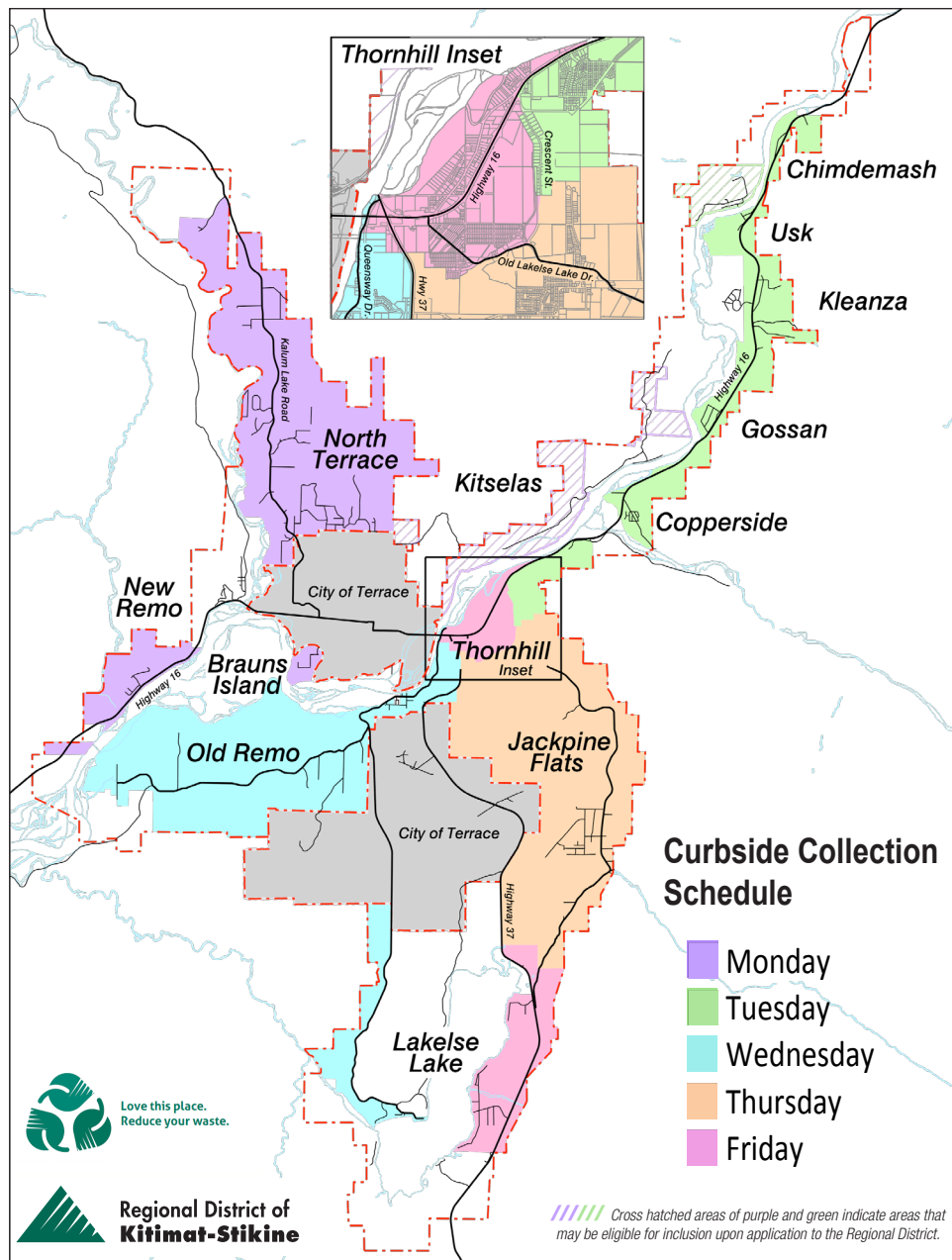
Biodegradable plastic bags Plastic bags, wrap, or containers



Products made of Polylactic Acid (PLA) (containers, disposable plates, cutlery)



Service Area Map



2024 Collection Schedule

Legend Recycle Garbage Organics No Collection

No Collection on the Following Days: New Year's Day, Family Day, Good Friday, Victoria Day, Canada Day, BC Day, Labour Day, National Day for Truth and Reconciliation, Thanksgiving Day, Remembrance Day and Christmas Day. **Collection occurs the following business day.**

TO THE CURB
**8:00
am**

| JANUARY 2024 | | | | | | |
|--------------|----|----|----|----|----|----|
| S | M | T | W | T | F | S |
| | 1 | 2 | 3 | 4 | 5 | 6 |
| 7 | 8 | 9 | 10 | 11 | 12 | 13 |
| 14 | 15 | 16 | 17 | 18 | 19 | 20 |
| 21 | 22 | 23 | 24 | 25 | 26 | 27 |
| 28 | 29 | 30 | 31 | | | |

January: Stat Monday pickup is Tuesday

| FEBRUARY 2024 | | | | | | |
|---------------|----|----|----|----|----|----|
| S | M | T | W | T | F | S |
| | | | | 1 | 2 | 3 |
| 4 | 5 | 6 | 7 | 8 | 9 | 10 |
| 11 | 12 | 13 | 14 | 15 | 16 | 17 |
| 18 | 19 | 20 | 21 | 22 | 23 | 24 |
| 25 | 26 | 27 | 28 | 29 | | |

February: Stat Monday pickup is Tuesday

| MARCH 2024 | | | | | | |
|------------|---|----|----|----|----|----|
| S | M | T | W | T | F | S |
| | | | | | 1 | 2 |
| 3 | 4 | 5 | 6 | 7 | 8 | 9 |
| 10 | 11 | 12 | 13 | 14 | 15 | 16 |
| 17 | 18 | 19 | 20 | 21 | 22 | 23 |
| 24 | 25 | 26 | 27 | 28 | 29 | 30 |
| 31 | May: Stat Friday pickup is following Monday | | | | | |

| APRIL 2024 | | | | | | |
|------------|----|----|----|----|----|----|
| S | M | T | W | T | F | S |
| | 1 | 2 | 3 | 4 | 5 | 6 |
| 7 | 8 | 9 | 10 | 11 | 12 | 13 |
| 14 | 15 | 16 | 17 | 18 | 19 | 20 |
| 21 | 22 | 23 | 24 | 25 | 26 | 27 |
| 28 | 29 | 30 | | | | |

| MAY 2024 | | | | | | |
|----------|----|----|----|----|----|----|
| S | M | T | W | T | F | S |
| | | | 1 | 2 | 3 | 4 |
| 5 | 6 | 7 | 8 | 9 | 10 | 11 |
| 12 | 13 | 14 | 15 | 16 | 17 | 18 |
| 19 | 20 | 21 | 22 | 23 | 24 | 25 |
| 26 | 27 | 28 | 29 | 30 | 31 | |

May: Stat Monday pickup is Tuesday

| JUNE 2024 | | | | | | |
|-----------|----|----|----|----|----|----|
| S | M | T | W | T | F | S |
| | | | | | | 1 |
| 2 | 3 | 4 | 5 | 6 | 7 | 8 |
| 9 | 10 | 11 | 12 | 13 | 14 | 15 |
| 16 | 17 | 18 | 19 | 20 | 21 | 22 |
| 23 | 24 | 25 | 26 | 27 | 28 | 29 |
| 30 | | | | | | |

| JULY 2024 | | | | | | |
|-----------|----|----|----|----|----|----|
| S | M | T | W | T | F | S |
| | 1 | 2 | 3 | 4 | 5 | 6 |
| 7 | 8 | 9 | 10 | 11 | 12 | 13 |
| 14 | 15 | 16 | 17 | 18 | 19 | 20 |
| 21 | 22 | 23 | 24 | 25 | 26 | 27 |
| 28 | 29 | 30 | 31 | | | |

July: Stat Monday pickup is Tuesday

| AUGUST 2024 | | | | | | |
|-------------|----|----|----|----|----|----|
| S | M | T | W | T | F | S |
| | | | | 1 | 2 | 3 |
| 4 | 5 | 6 | 7 | 8 | 9 | 10 |
| 11 | 12 | 13 | 14 | 15 | 16 | 17 |
| 18 | 19 | 20 | 21 | 22 | 23 | 24 |
| 25 | 26 | 27 | 28 | 29 | 30 | 31 |

August: Stat Monday pickup is Tuesday

| SEPTEMBER 2024 | | | | | | |
|----------------|----|----|----|----|----|----|
| S | M | T | W | T | F | S |
| 1 | 2 | 3 | 4 | 5 | 6 | 7 |
| 8 | 9 | 10 | 11 | 12 | 13 | 14 |
| 15 | 16 | 17 | 18 | 19 | 20 | 21 |
| 22 | 23 | 24 | 25 | 26 | 27 | 28 |
| 29 | 30 | | | | | |

September: Stat Monday pickup is Tuesday

| OCTOBER 2024 | | | | | | |
|--------------|----|----|----|----|----|----|
| S | M | T | W | T | F | S |
| | | 1 | 2 | 3 | 4 | 5 |
| 6 | 7 | 8 | 9 | 10 | 11 | 12 |
| 13 | 14 | 15 | 16 | 17 | 18 | 19 |
| 20 | 21 | 22 | 23 | 24 | 25 | 26 |
| 27 | 28 | 29 | 30 | 31 | | |

October: Stat Monday pickup is Tuesday

| NOVEMBER 2024 | | | | | | |
|---------------|----|----|----|----|----|----|
| S | M | T | W | T | F | S |
| | | | | | 1 | 2 |
| 3 | 4 | 5 | 6 | 7 | 8 | 9 |
| 10 | 11 | 12 | 13 | 14 | 15 | 16 |
| 17 | 18 | 19 | 20 | 21 | 22 | 23 |
| 24 | 25 | 26 | 27 | 28 | 29 | 30 |

November: Stat Monday pickup is Tuesday

| DECEMBER 2024 | | | | | | |
|---------------|----|----|----|----|----|----|
| S | M | T | W | T | F | S |
| 1 | 2 | 3 | 4 | 5 | 6 | 7 |
| 8 | 9 | 10 | 11 | 12 | 13 | 14 |
| 15 | 16 | 17 | 18 | 19 | 20 | 21 |
| 22 | 23 | 24 | 25 | 26 | 27 | 28 |
| 29 | 30 | 31 | | | | |

December: Stat Wednesday pickup is Thursday